

#01

IMAR QUITEC

IMARperf



Architectural Solutions
ready to be installed perforated panels



1.1

PANELS & TRAYS

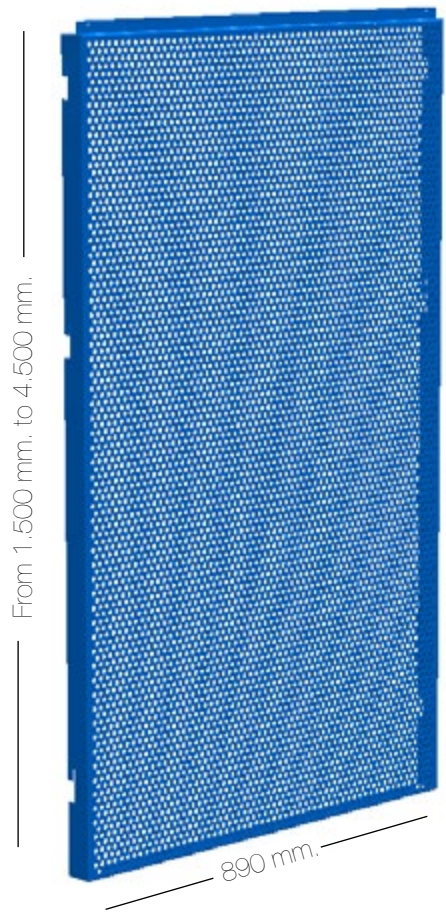
Aluminium / Galvanized Steel /
Weathering Steel (CorTen Steel)

Aluminium (2 mm. thick), Galvanized Steel (1.5 mm. thick) or Weathering Steel (1.5 mm. thick) panels. (Other materials and thicknesses under request).

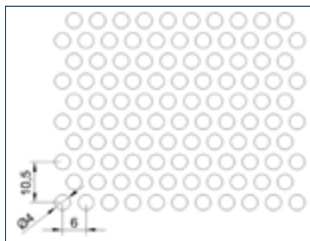


Characteristics

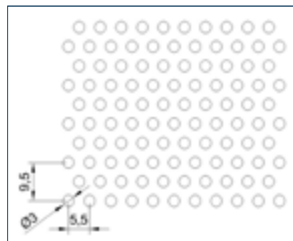
- **Width:** 890 mm.
- **Height:** from 1.500 mm. to 4.500 mm. (other options under request).
- **Micro-perforation:** 3 & 4 mm. diameter holes.
- **Perforated area:** various options based according to the application.
- **Colour:** to be chosen from the RAL range (visit: www.coloresral.es).



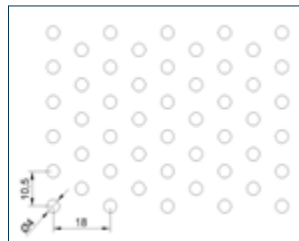
Micro-perforated Pattern



R4T6
40,3% perforated area



R3T5,5
27% perforated area



R4T10,5
13,2% perforated area

A high percentage of perforated area is recommended for glass façades. In this way, high transparency can be achieved from the inside (veil effect), while maintaining privacy from the outside.

This veil effect reduces solar incidence over glass surfaces. Perforated hole size and area can be adjusted according both to climate factors and façade orientation to achieve optimum and measurable energy savings



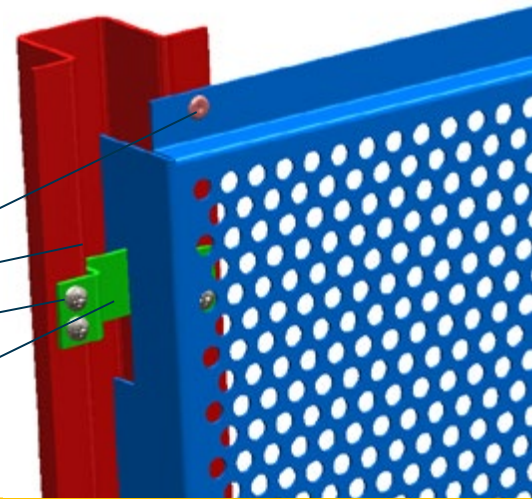
1.2

ASSEMBLY SYSTEM

The system includes all necessary elements for proper installation on site.

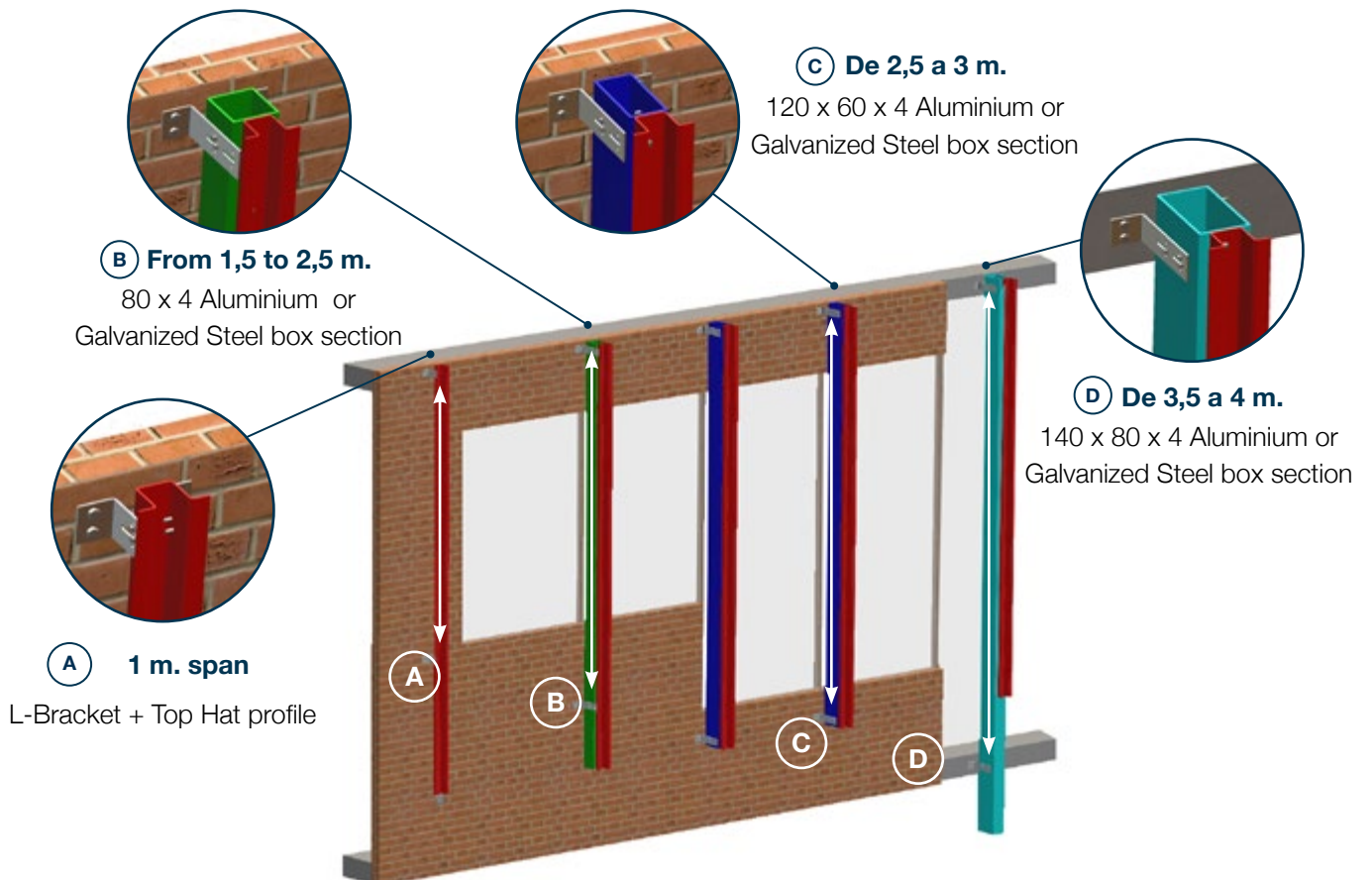


- 4.8 mm. diameter aluminium head rivets
- 3 mm. thick aluminium or 2 mm. thick galvanized profiles
- A2 quality self-tapping screws
- 3 mm. thick aluminium or 2 mm. thick galvanized clip



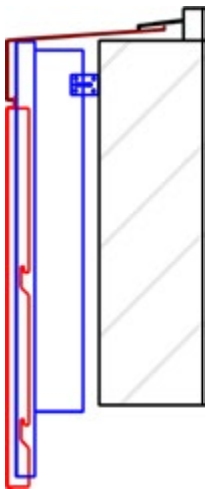
Substructure type: maximum distances to be covered

- Anchoring to the façade with top-hat profiles and 70 mm. or 150 mm. L-brackets.

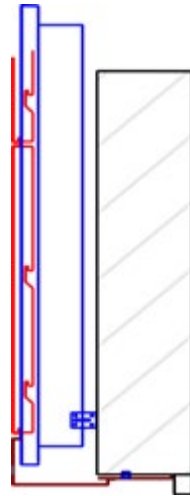


1.3

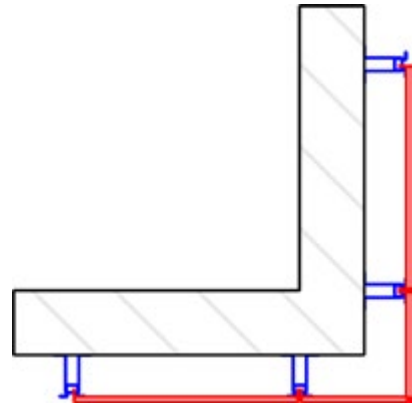
FLASHINGS



Flashings (around cladding)



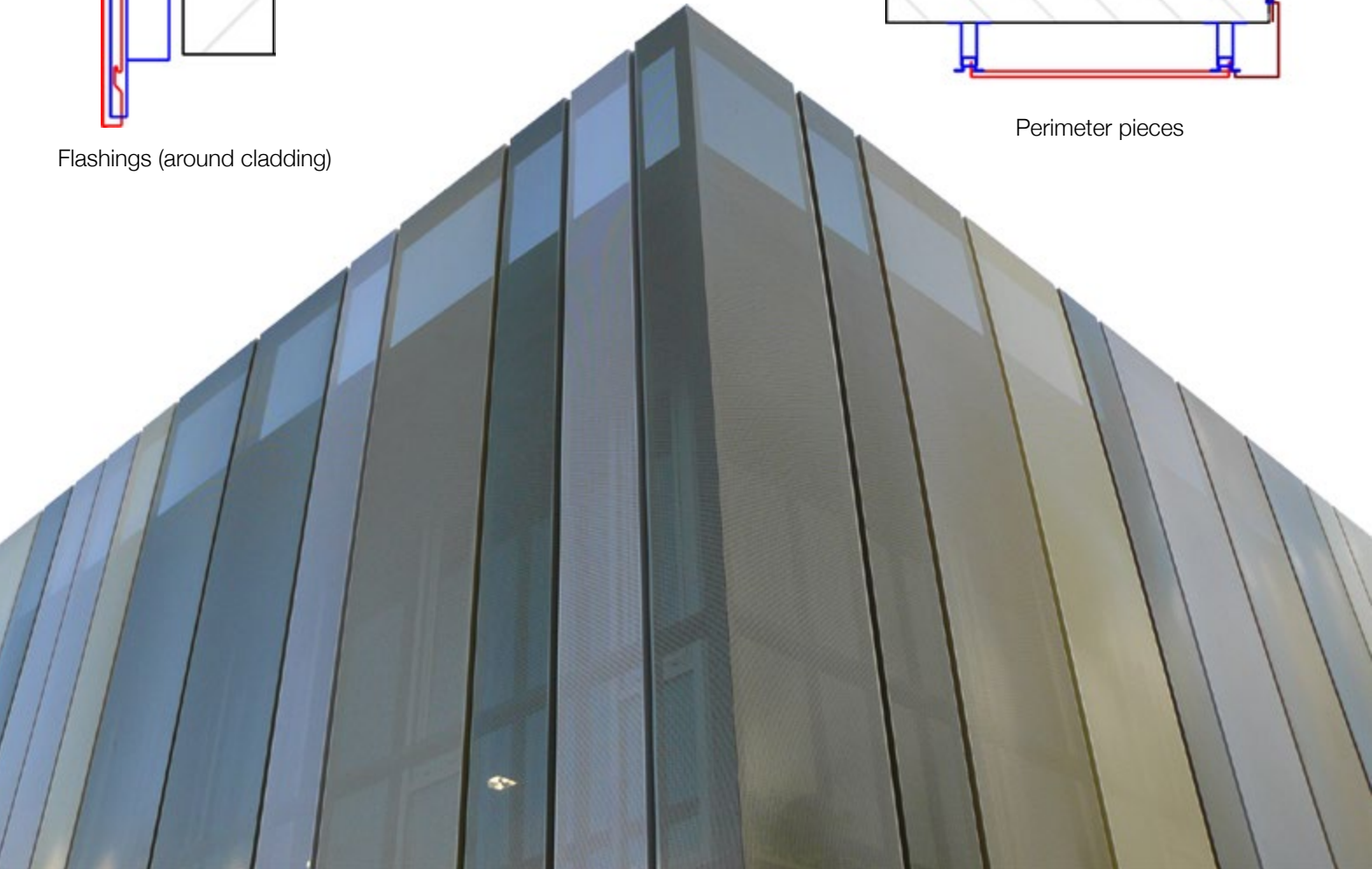
Flashings (around window holes)



Corner pieces



Perimeter pieces





What does Imarquitec offer you?

Imarquitec are complete systems for external and internal claddings supplied with everything needed for installation.

Chose the suitable model and colour and define the area to be covered. And we deliver it to you with everything necessary for an easy installation.



IMARperf - Technical card

Raw material	Aluminium / Galvanized Steel / Wheathering Steel
Dimensions	Width: 890 mm Height: 1.500 mm. to 4.500 mm.
Micro-perforation	3 y 4 mm.
Flashings	Flashings (around cladding) / Corner pieces / Perimeter pieces
Assembly system	Included

Other Systems IMARQUITEC	#01 IMARperf	#04 IMARaqua	#07 IMARflight
	#02 IMARsplash	#05 IMARexp	#08 IMARgeometry
	#03 IMARimagen	#06 IMARframe	



IMAR Benelux represented by:

Primoclad Europe B.V.
Europalaan 16
2408 BG ALPHEN AAN DEN RIJN
THE NETHERLANDS
Tel: +31 (0)85-4013421
www.primoclad.nl
info@primoclad.nl



IMAR ▶

www.imarsa.com