

# #03

## IMARQUITEC

### IMARimagen

---

IMAR ▶

Perforated Imagery Architectural Solutions  
perforated metal



# 3.1

## PANELS & TRAYS

Lacquered perforated aluminium.

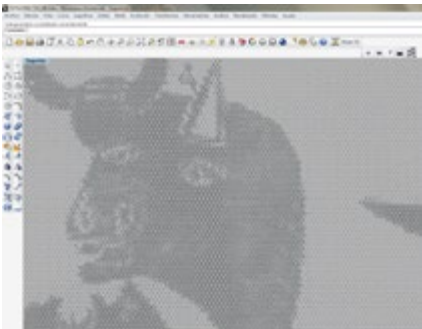
2 mm thick aluminium panel. Also supplied in Weathering Steel (CorTen steel) and stainless steel.(other materials and thicknesses under request).



### Characteristics

- **Width:** 890 mm (distance between axes, 900 mm).
- **Height:** 1.500 mm. to 4.500 mm. (other options upon request).
- **Micro-perforations:** 3 & 4 mm diameter holes.
- **Open area:** various combinations available to achieve required pattern.
- **Colour:** to be chosen from the RAL range (visit: [www.coloresral.es](http://www.coloresral.es))

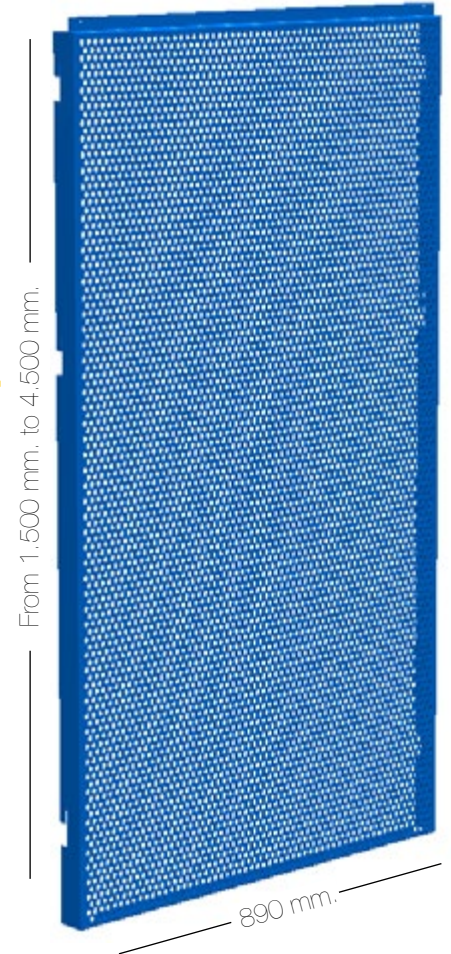
### Micro-perforated Pattern



By using an image with the adequate resolution, and through the use of internally developed software, we can convert an image into a perforation pattern which is in turn adjusted to the project's proper dimension.

High open areas percentages are recommended for glass façades in order to achieve high transparency from the inside (veil effect), while maintaining privacy from the outside.

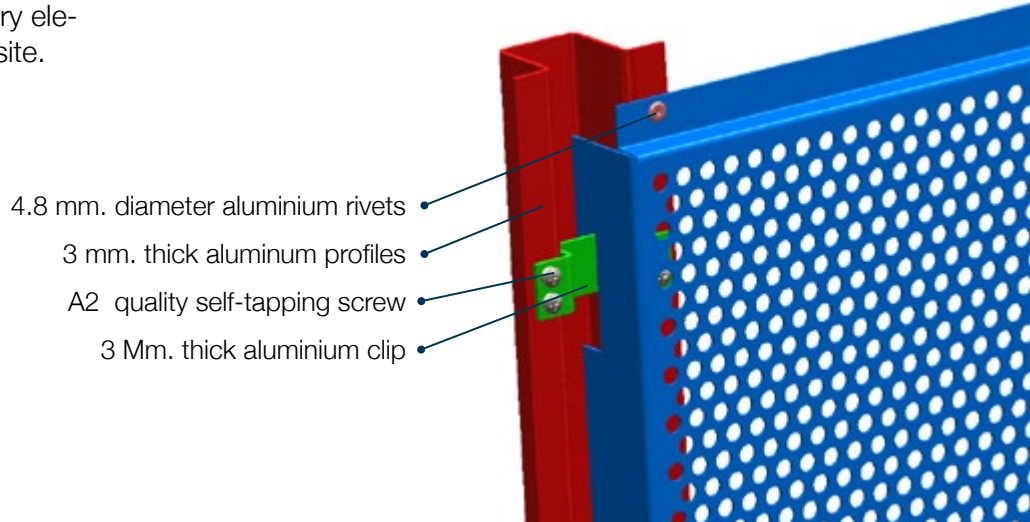
The use of this envelope clearly reduces solar incidence on glass surfaces which, based both on climate factors and façade location, allows for measurable energy savings.



# 3.2

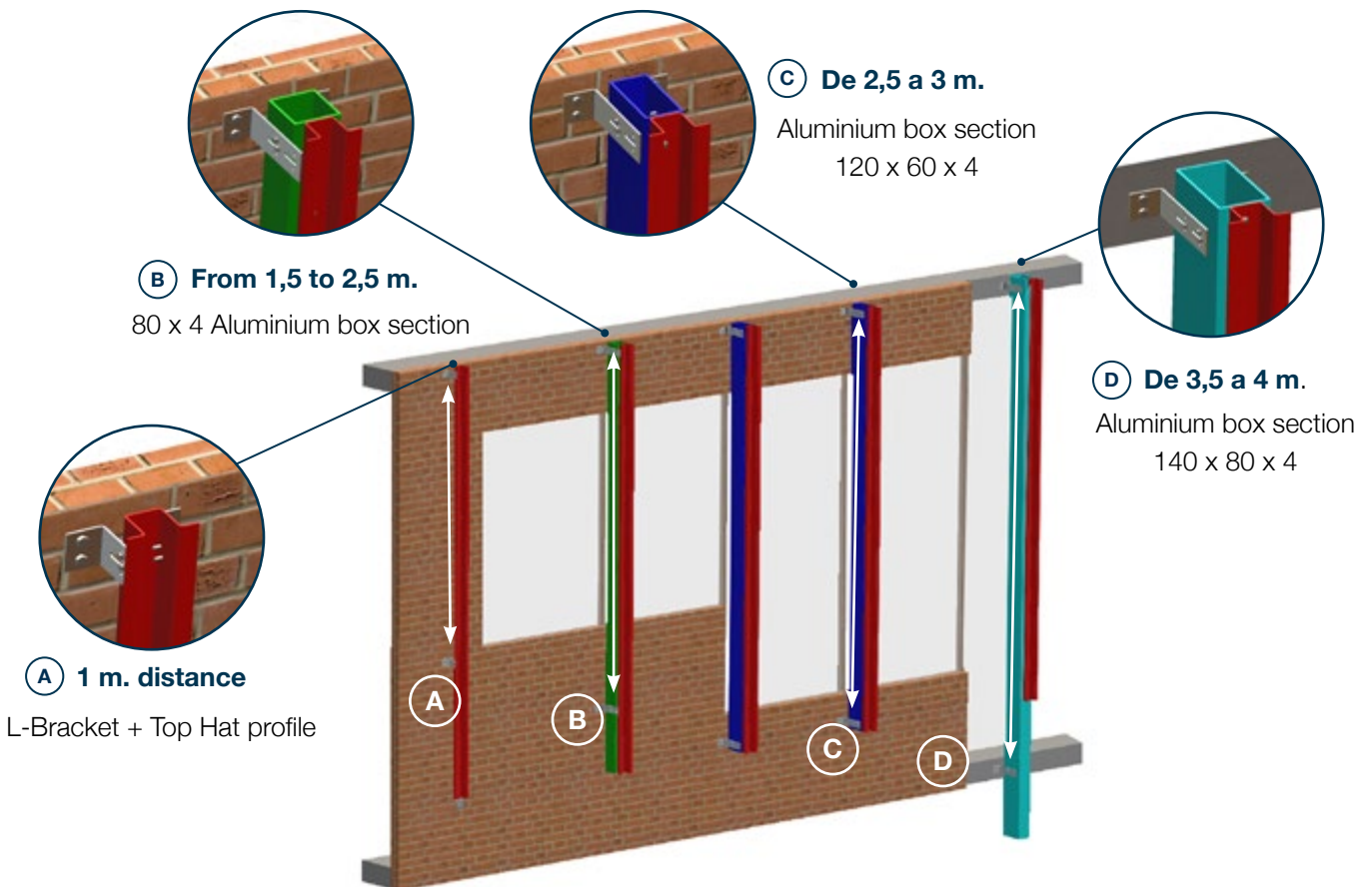
## ASSEMBLY SYSTEM

The system includes all necessary elements for proper installation on site.



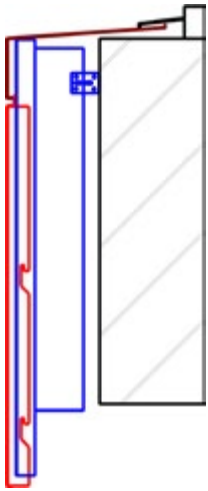
### Substructure type: maximum distances to be covered

- Anchoring to the façade with top-hat profiles and 70 mm. or 150 mm. L-brackets.



# 3.3

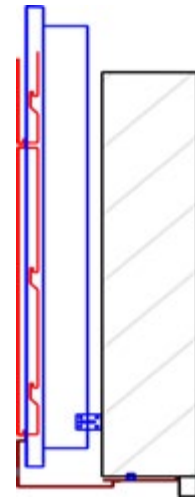
## FLASHINGS



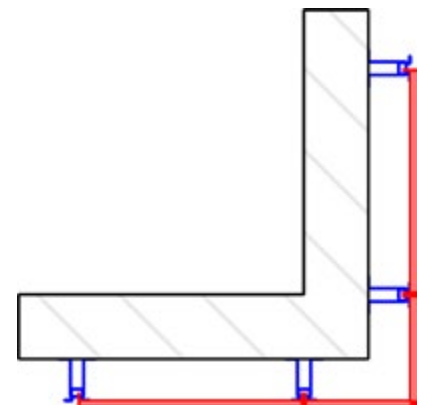
Flashings (around cladding)



Flashings (around window holes)



Corner pieces



Perimeter pieces



### What does Imarquitec offer you?

Imarquitec are complete systems for external and internal claddings supplied with everything needed for installation.

Chose the suitable model and colour and define the area to be covered. And we deliver it to you with everything necessary for an easy installation.

## → IMARimagen - Technical Card

Raw material	Aluminium / Galvanized Steel / Wheathering Steel
Dimensions	Width: 890 mm. Height: 1.500 mm. to 4.500 mm.
Flashings	Flashings (around cladding) / Corner pieces / Perimeter pieces
Assembly system	Included

Other Systems IMARQUITEC	#01 IMARperf	#04 IMARaqua	#07 IMARflight
	#02 IMARsplash	#05 IMARexp	#08 IMARgeometry
	#03 IMARimagen	#06 IMARframe	



IMAR Benelux represented by:

Primoclad Europe B.V.  
Europalaan 16  
2408 BG ALPHEN AAN DEN RIJN  
THE NETHERLANDS  
Tel: +31 (0)85-4013421  
[www.primoclad.nl](http://www.primoclad.nl)  
[info@primoclad.nl](mailto:info@primoclad.nl)



**IMAR** ▶

[www.imarsa.com](http://www.imarsa.com)