

# #05

## IMAR QUITEC

IMARexp

---

IMAR ▶

Ready to be installed Architectural Solutions  
expanded metal meshes



# 5.1

## PANELS & TRAYS

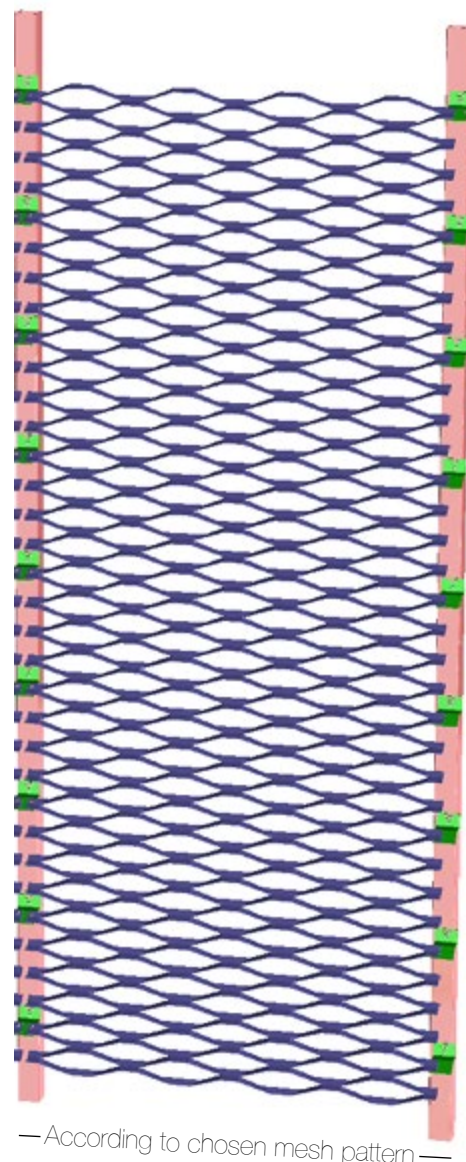
Aluminium, Galvanized Steel and Weathering Steel expanded metal panel

2 mm. thick expanded metal panels. Also supplied in pre-galvanized steel and weathering steel (CorTen Steel). (Other materials and thicknesses under request).

### Characteristics

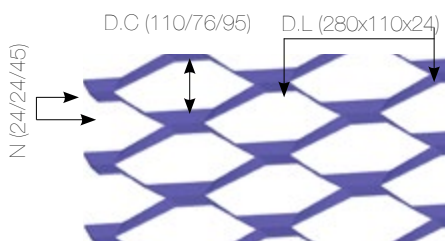
- **Width:**  
 RO 280 x 110 x 24; width 1.420 mm. (1.435 mm. inter-axis)  
 RO 205 x 76 x 24; width 1.250 mm. (1.265 mm. inter-axis)  
 RO 170 x 95 x 45; width 1.380 mm. (1.395 mm. inter-axis)
- **Height:** 1.500 mm. to 4.500 mm.

From 1.500 mm. to 4.500 mm.



### Expanded Metal

Expanded metal panels with various open area options:



- RO 280 x 110 x 24 - 56,4% Open Area.
- HE 205 x 76 x 24 - 36,9% Open Area
- RO 170 x 95 x 45 - 5,3% Open Area.

There is the option of manufacturing perforated and expanded metal panels to increase the open area.

A high percentage of perforated area is recommended for glass façades. In this way, high transparency can be achieved from the inside (veil effect), while maintaining privacy from the outside.

This veil effect reduces solar incidence on glass surfaces. Perforated hole size and area can be adjusted according both to climate factors and façade orientation to achieve optimum and measurable energy savings.



# 5.2

## ASSEMBLY SYSTEM

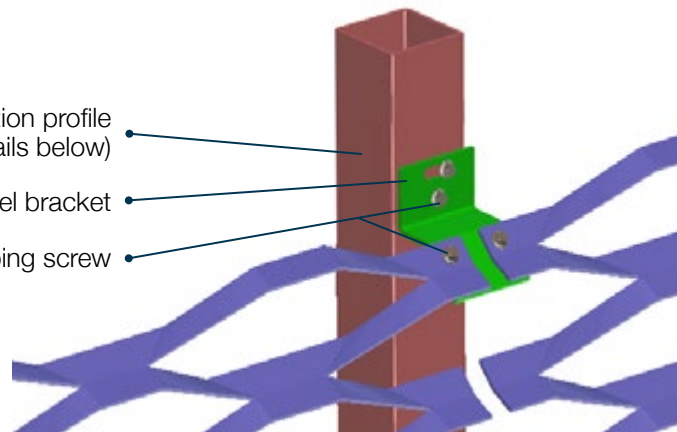
The system includes all necessary elements for proper installation on site.



Aluminium or Galvanized Steel box section profile  
(Please see details below)

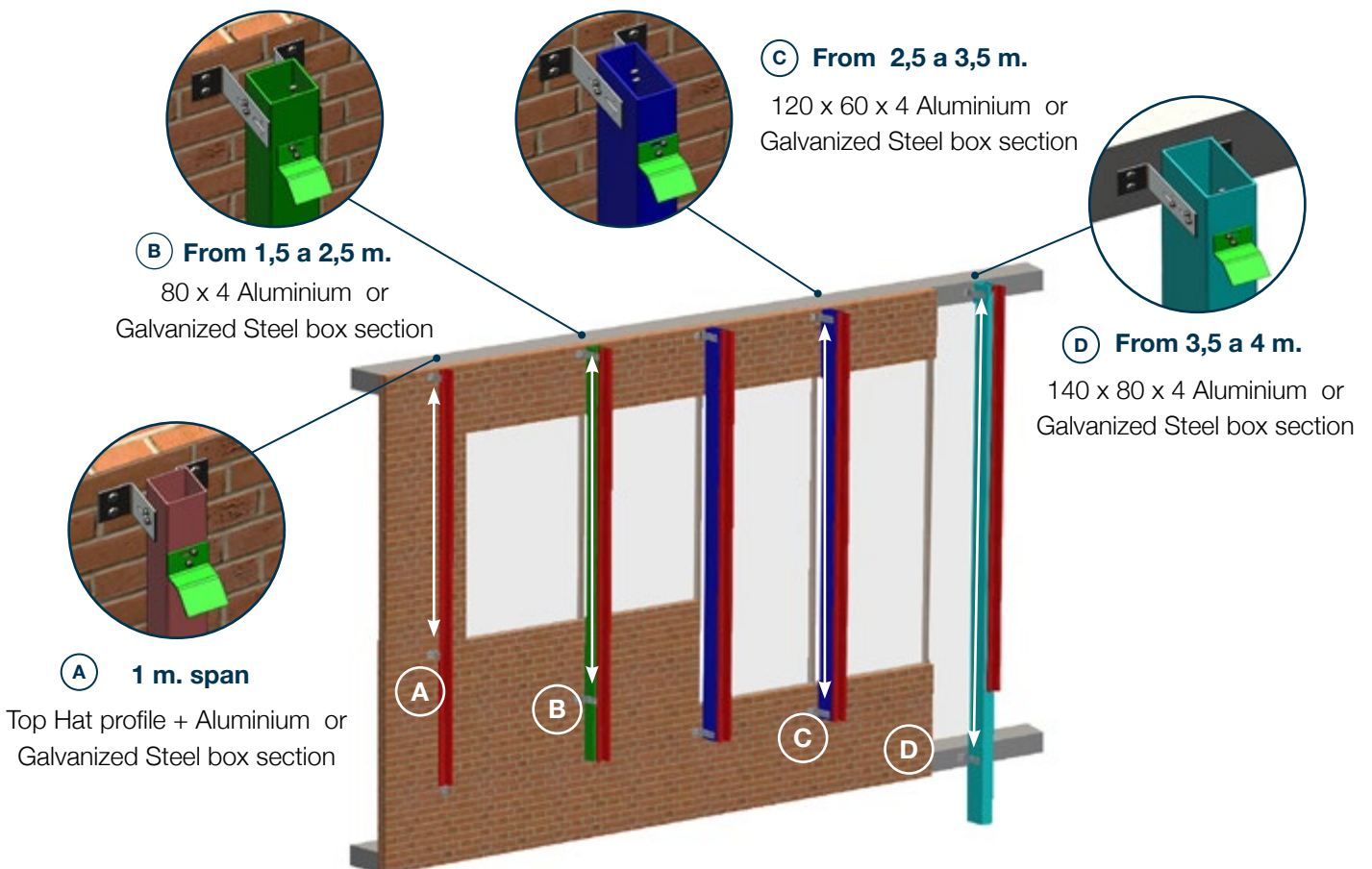
2 mm. thick Stainless Steel bracket

A2 quality, 5,5 mm. self-tapping screw



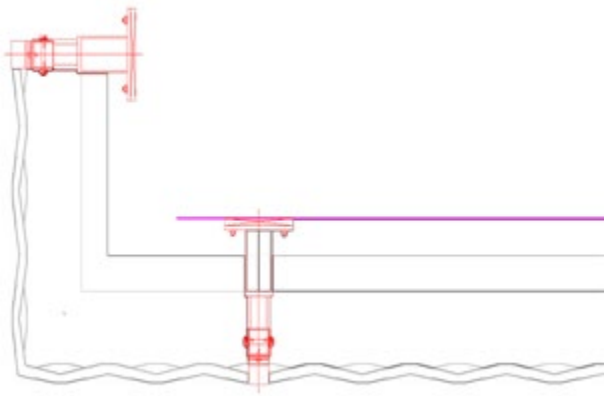
### Substructure type: maximum distances to be covered.

- Anchoring to the façade with top-hat profiles and 70 mm. or 150 mm. L-brackets.

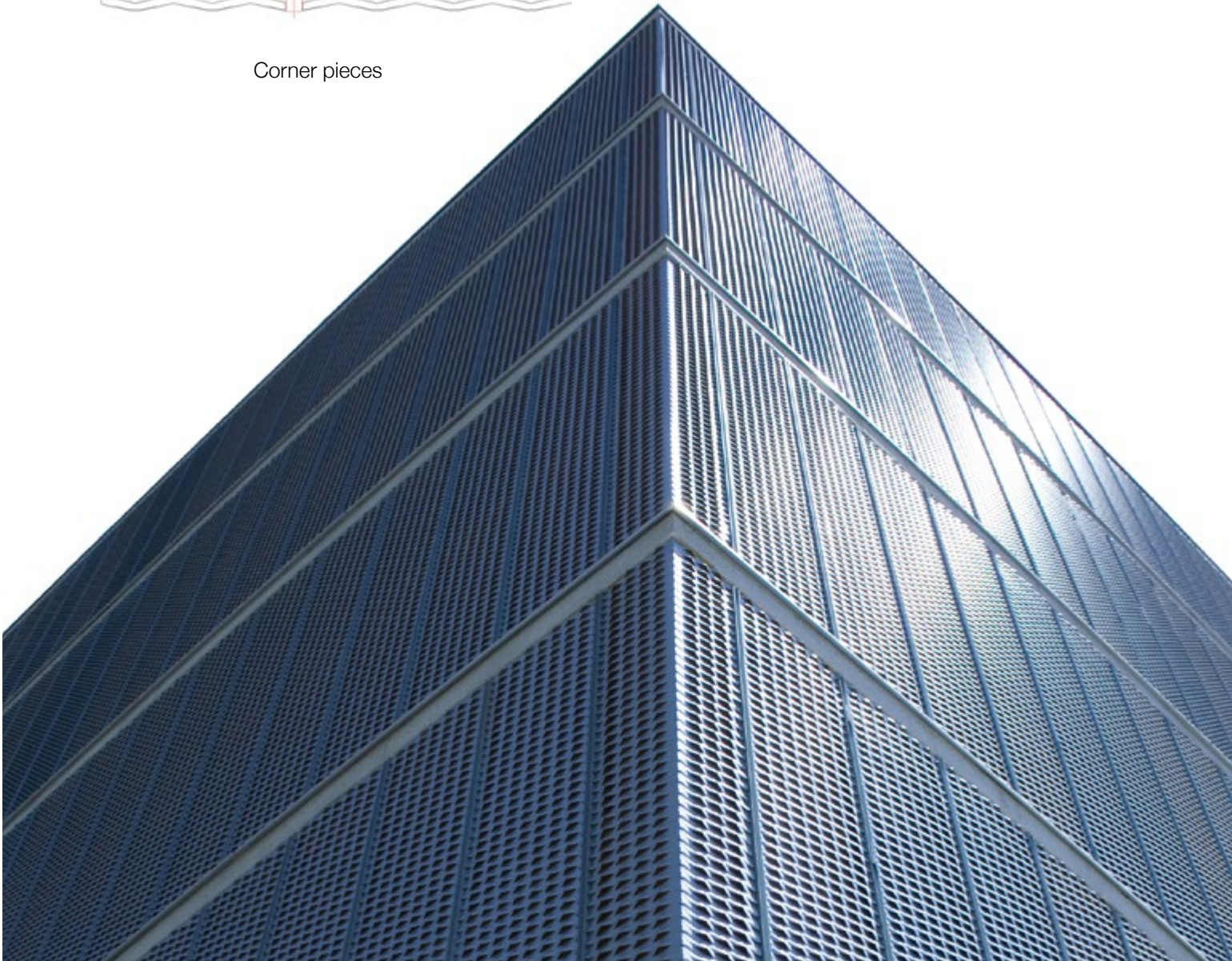


# 5.3

## FLASHINGS



Corner pieces





## What does Imarquitec offer you?

Imarquitec are complete systems for external and internal claddings supplied with everything needed for installation.

Chose the suitable model and colour and define the area to be covered. And we deliver it to you with everything necessary for an easy installation.



## IMARexp- Technical Card

Raw material	Aluminium / Galvanized Steel / Wheathering Steel
Dimensions	Width: according to chosen mesh pattern Height: 1.500 mm. to 4.500 mm.
Flashings	Corner pieces
Assembly system	Included

Other Systems IMARQUITEC	#01 IMARperf	#04 IMARaqua	#07 IMARflight
	#02 IMARsplash	#05 IMARexp	#08 IMARgeometry
	#03 IMARimagen	#06 IMARframe	



IMAR Benelux represented by:

Primoclad Europe B.V.  
Europalaan 16  
2408 BG ALPHEN AAN DEN RIJN  
THE NETHERLANDS  
Tel: +31 (0)85-4013421  
[www.primoclad.nl](http://www.primoclad.nl)  
[info@primoclad.nl](mailto:info@primoclad.nl)



**IMAR** ▶

[www.imarsa.com](http://www.imarsa.com)